

Carriage and use of PEDs and Portable EFBs in the cockpit



ESPN-R ST Training
Mathieu Vandevenne

ESPN-R Training TEAM



- **Mathieu VANDENAVENNE**



Professionnal Helicopter Pilot on AS350, EC135 and Cabri G2

Helicopter Flight Instructor, Type Rating Instructor and Type Rating Examiner

CEO and founder of SAFETY FOR FLIGHT company, dedicated to flight safety, customer support and compliance in helicopters operations

Training team leader in the ESPN-R since 2018

contact@safety4flight.com / mathieu.vandenavenne@safety4flight.com

PED, T-PED, EFB, Portable EFB...



PED, T-PED, EFB, Portable EFB...

- Portable electronic device (PED)
 - means any kind of electronic device, typically but not limited to consumer electronics, brought on board the aircraft by crew members, passengers, or as part of the cargo, that is not included in the configuration of the certified aircraft.

It includes all equipment that is able to consume electrical energy. The electrical energy can be provided from internal sources such as batteries (chargeable or non-rechargeable) or the devices may also be connected to specific aircraft power sources.

The term 'transmitting PED' (T-PED) is used to identify the transmitting capability of the PED.

PED, T-PED, EFB, Portable EFB...

- Portable electronic device (PED)
 - means **any kind of electronic device**, typically but not limited to consumer electronics, brought on board the aircraft by crew members, passengers, or as part of the cargo, **that is not included in the configuration of the certified aircraft**.

It includes all equipment that is able to consume electrical energy. The electrical energy can be provided from internal sources such as batteries (chargeable or non-rechargeable) or the devices may also be connected to specific aircraft power sources.

The term 'transmitting PED' (T-PED) is used to identify the transmitting capability of the PED.

PED, T-PED, EFB, Portable EFB...



PED, T-PED, EFB, Portable EFB...



PED, T-PED, EFB, Portable EFB...

- Electronic Flight Bag (EFB)
 - Means an electronic information system, comprised of equipment and applications for flight crew, which allows for the storing, updating, displaying and processing of EFB functions to support flight operations or duties
 - Portable EFB
 - Means a portable EFB host platform, used on the flight deck, which is not part of the configuration of the certified aircraft
- A portable EFB is a portable electronic device (PED)

PED, T-PED, EFB, Portable EFB...

- **PED regulation:**

- CAT.GEN.140 Portable Electronic Devices
- NCC.GEN.130 Portable Electronic Devices
- SPO.GEN.130 Portable Electronic Devices
- NCO.GEN.125 Portable Electronic Devices

- **EFB regulation:**

- CAT.GEN.141 Use of Electronic Flight Bags (EFBs)
- NCC.GEN.131 Use of Electronic Flight Bags (EFBs)
- SPO.GEN.131 Use of Electronic Flight Bags (EFBs)
- **NCO.GEN.125 Portable Electronic Devices -> AMC1 and AMC2**

PED Risk Management



<https://www.youtube.com/watch?v=CNsp8Wr4DJM>

PED Risk Management

- Remember the key risks:
 - ✓ FOD and flight control obstruction
 - ✓ Distraction in flight
 - ✓ Thermal runaway

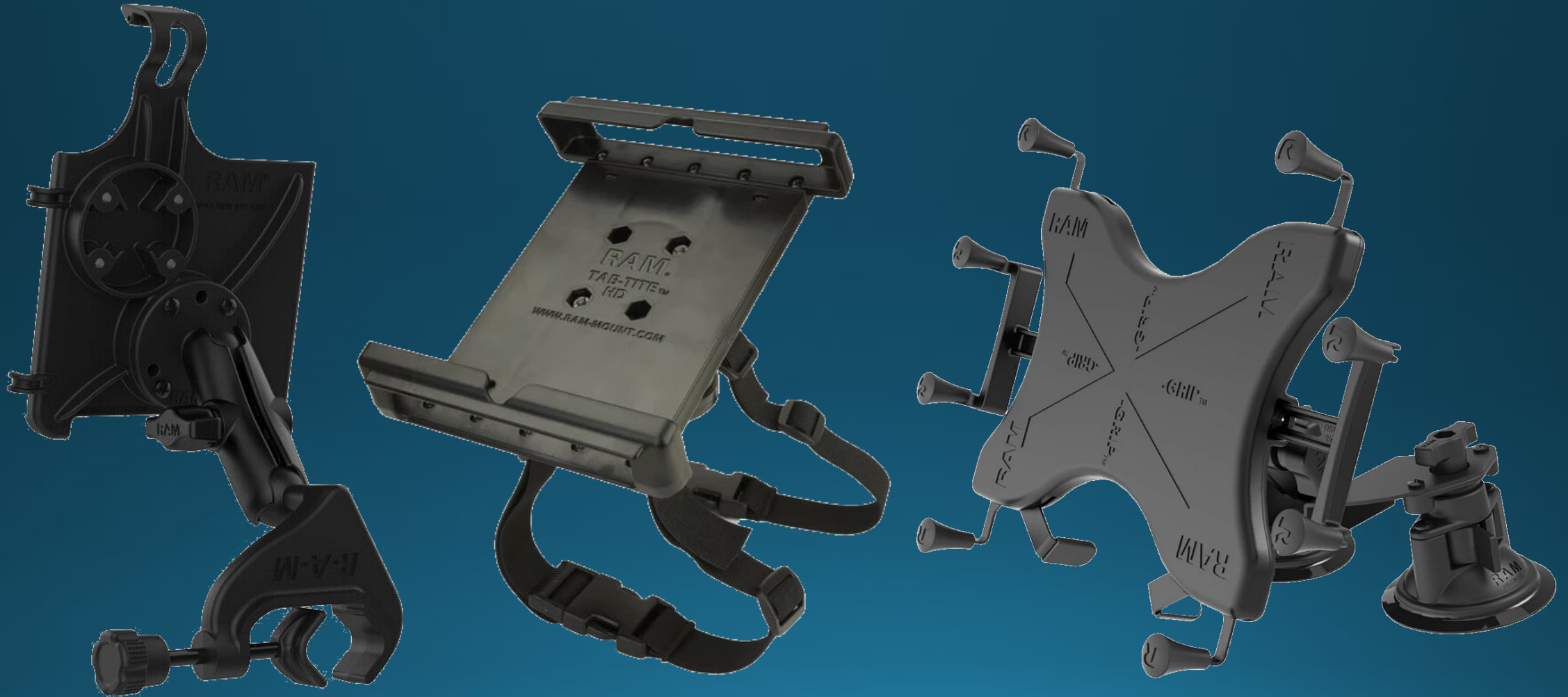
PED Risk Management

**AND YOU, HOW DO PREPARE YOURSELF
AND MITIGATE THE RISK?**

PED Risk Management



PED Risk Management



PED Risk Management



PED Risk Management



Passenger briefing...

PED Risk Management



together4safety

ELECTRONIC FLIGHT BAG – EMERGENCY PROCEDURES

In flight, the lithium battery of the portable EFB can be subject to thermal runaway, the subject of significant heat release, smoke, or even the beginning of a fire in the helicopter.

This danger is applicable to all PEDs and electronic equipment on board the aircraft, and equipped with a lithium battery. The following procedures may therefore be applicable to any thermal runaway of PEDs or electronic equipment, and it is necessary to have a fireproof pouch on-board, ready to access by the pilot. It is recommended for the pilot to wear fireproof flight gloves, like Nomex gloves, all the times during the flight.

Protective equipment

Check the presence of the fireproof pouch on board before starting the mission.

Power supply

Immediately disconnect any power cable connected to the EFB or PED.

System Protection

Switch the EFB and all T-PEDs to airplane mode or turn them off.

If the situation requires it, apply the cabin fire/smoke emergency procedure.

Suspicious smell, significant heat release, light smoke

- Open windows and vents
- Force the EFB to turn off (if possible)
- Take the fireproof pouch
- Secure the EFB in the fire pouch
- Place the pouch with the EFB in the storage compartment
- Issue an in-flight alert message

LAND AS SOON AS POSSIBLE

SCAN ME



THANK YOU FOR YOUR ATTENTION

SCAN ME



contact@safety4flight.com / mathieu.vandenavenne@safety4flight.com