

---

EASA Safety week

# BACK TOGETHER

## Parking and Storage & Return to Service



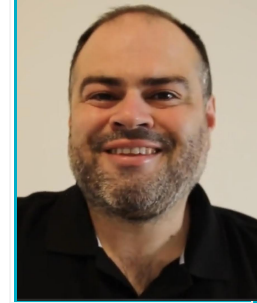
Presented by Melih DEMIR  
21-24/06/2021 - Hamburg

**AIRBUS**

# Parking & Storage and Return to Service

## » Expertise details

- Working > 18 years within Airbus
- Various functions in the past
  - X-Programs Maintenance Engineering MSG-3 specialist
  - A400M Maintenance program Zonal chairman
  - A320 Maintenance program deputy manager
  - Maintenance planning and customized maintenance program solutions focal point
  - Business development Manager
  - Parking and Storage Multifunctional Team Leader



*Presented by*

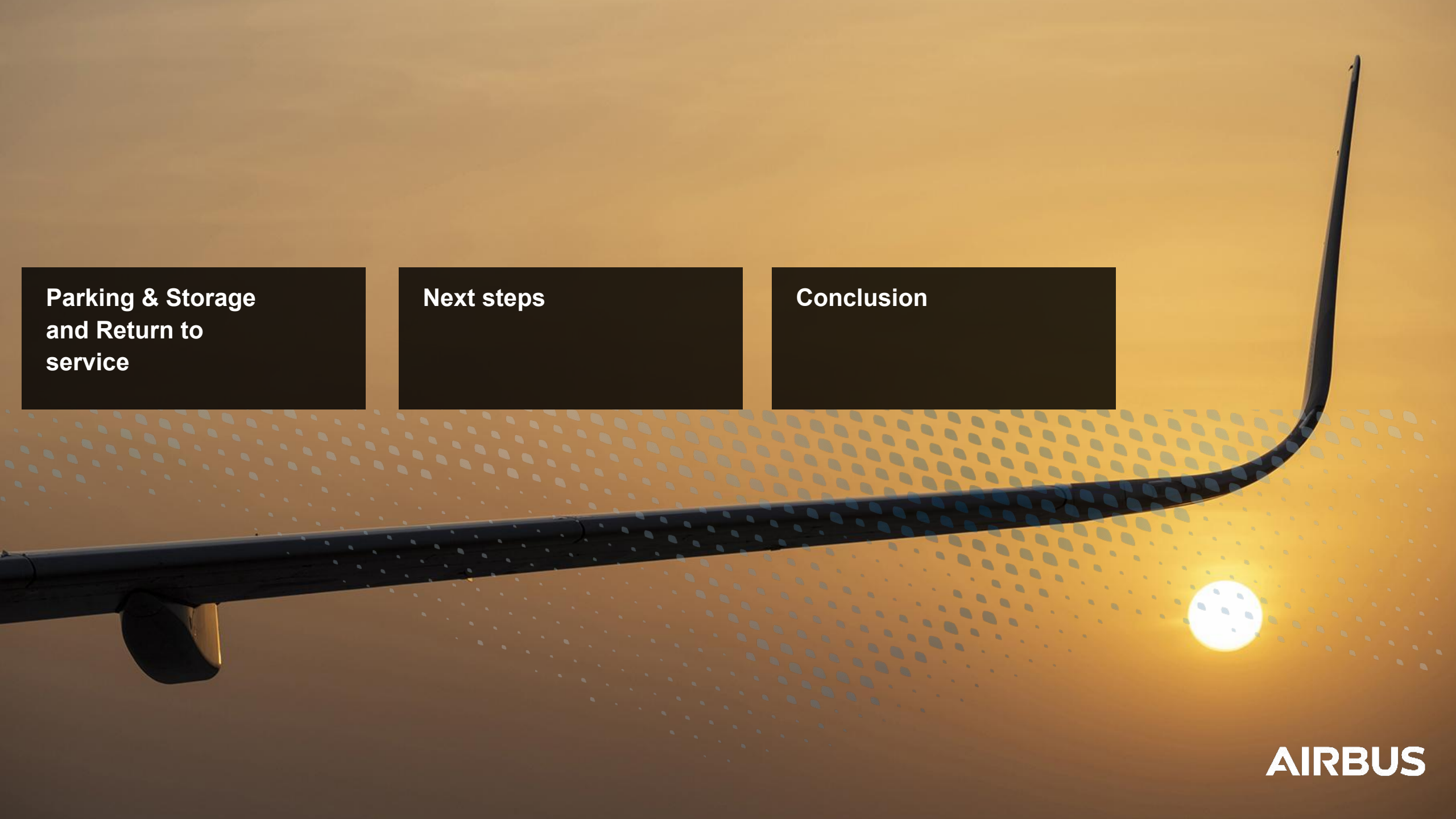
**Melih**

**DEMIR**

**Parking and Storage**

**MFT Leader**

[melih.demir@airbus.com](mailto:melih.demir@airbus.com)



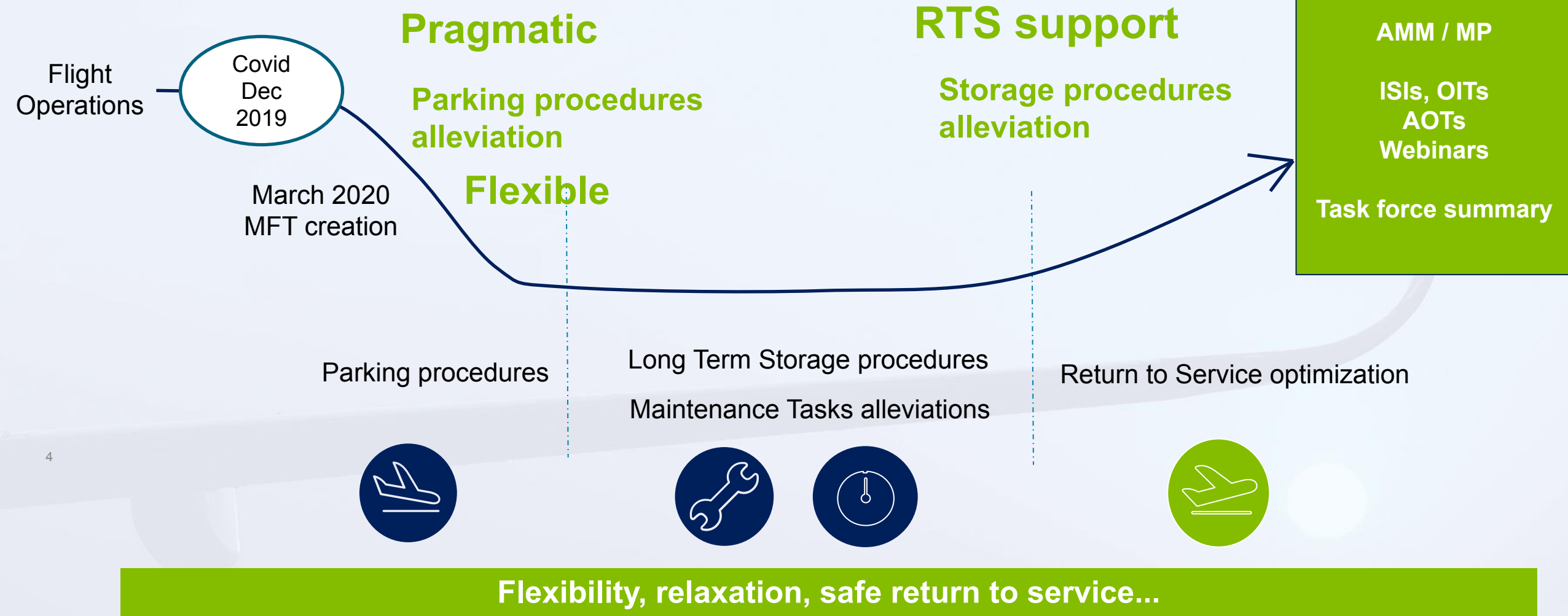
**Parking & Storage  
and Return to  
service**

**Next steps**

**Conclusion**

**AIRBUS**

# Parking and Storage and Return to Service alleviation



# Contribute to a safe and smooth Return to Service (RTS)



## **Anticipate**

Systematic review of RTS procedures, in-service experience to anticipate potential issues



## **Monitor** #RTS

Analyse in-service feedback & identify any developing issue, reporting to SMS part of MFT



**Support** safe #RTS, when decided to bring back the aircraft back to sky, e.g. introduction of a RTS Checklist



# Return to Service



Rodents, birds  
or insects  
nesting



Extended  
cannibalization



Corrosion in  
dedicated areas



Capacity  
reduction of  
aircraft main  
NiCd batteries



Pitot probes  
obstruction

# Parking and Storage & Return to service Regional input



**> 1,700** solutions  
shared since 2020

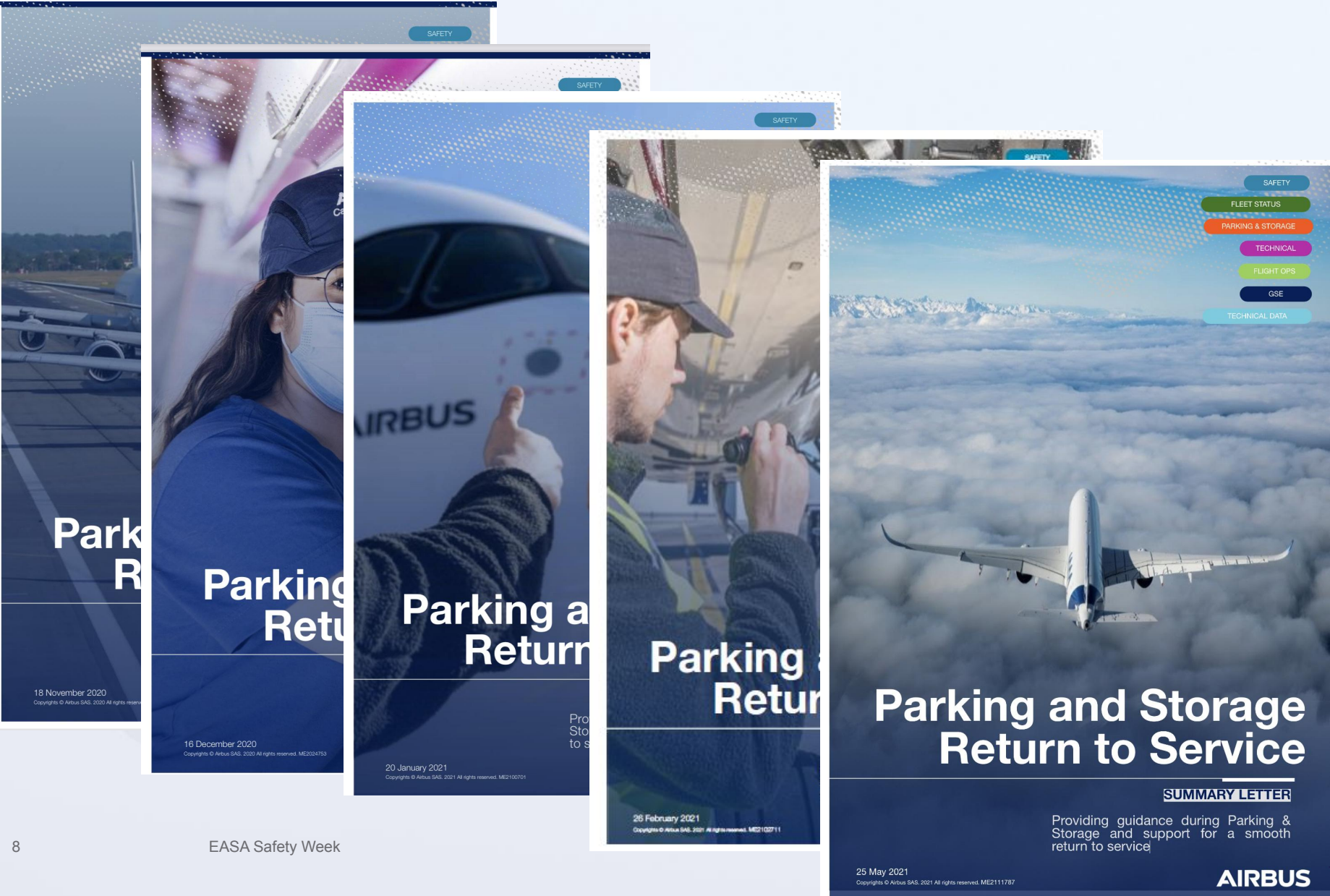


**50+**  
webinars



**690** advanced  
copies for Aircraft  
Maintenance  
Manual (AMM)

# Parking & Storage and Return to Service



## Next Steps

- Task force Summary
- All information for P&S solutions and RTS summarized within the document
- Monthly update



# Parking and Storage and Return to Service - Conclusion

- Introduction of Checklist
- Continue to support
- Long term storage solutions
- Safe & smooth return to service



# Thank you

This document and all information contained herein is the sole property of Airbus. No intellectual property rights are granted by the delivery of this document or the disclosure of its content. This document shall not be reproduced or disclosed to a third party without the expressed written consent of Airbus. This document and its content shall not be used for any purpose other than that for which it is supplied. Airbus, its logo and product names are registered trademarks.

# Glossary

- TA: Technical Adaptations
- RDAF: Repair or Design Approval Form.
- AMPES: Airbus Maintenance Program Engineering Statement.
- FCD: Flight Condition Document
- PGC: Periodic ground check
- MFT: Multi functional Team
- NRF: Non revenue flight
- LG: Landing Gear
- P&S: Parking and Storage
- EIS: Entry into service
- NLG / MLG: Nose/Main landing gear