



**MINISTÈRE  
CHARGÉ  
DES TRANSPORTS**

*Liberté  
Égalité  
Fraternité*



# STATE'S RISK MANAGEMENT DURING 2020 « LOW ACTIVITY » ... AND BEYOND

## Crisis phases

### Initial

- Surprise and startle effect
- Protection of workers and assets
- Reorganise oversight

### Reactive

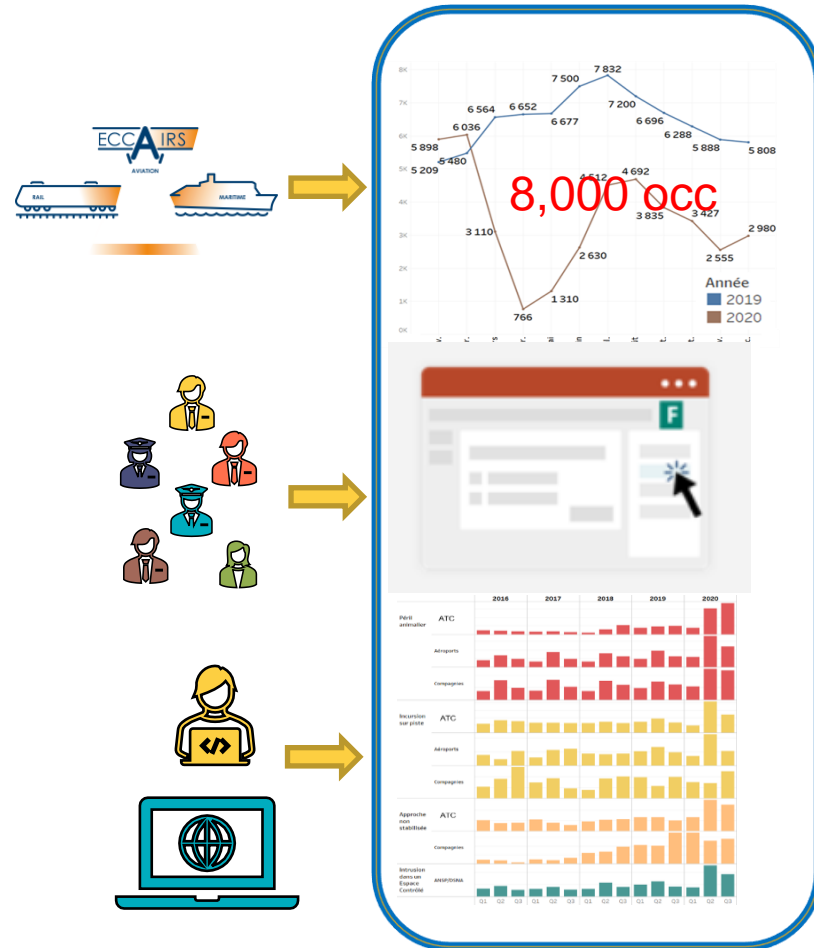
- What is going on
- Prioritize
- Safety leaflet = OPS 1st recommendations
- Answer questions as they come

### Proactive

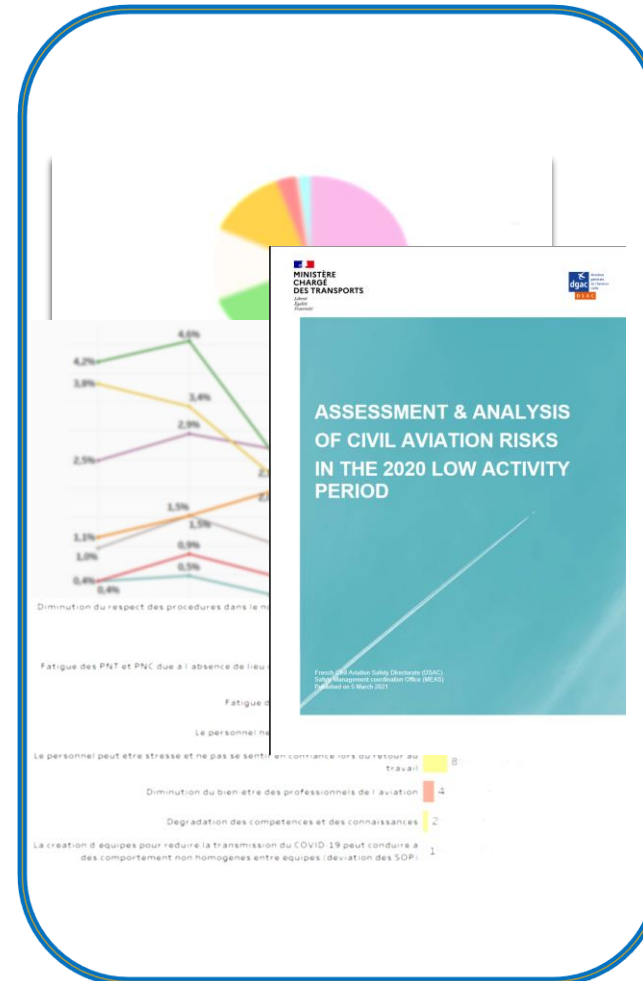
- **SSP**
  - Risk assessment - understand
  - RBO
  - Adjust to situation + anticipate

# Objectives

- Comprehensive risk assessment
- Operators aware of issues
- Recommend



COVID-19  
Guidance /  
Advice



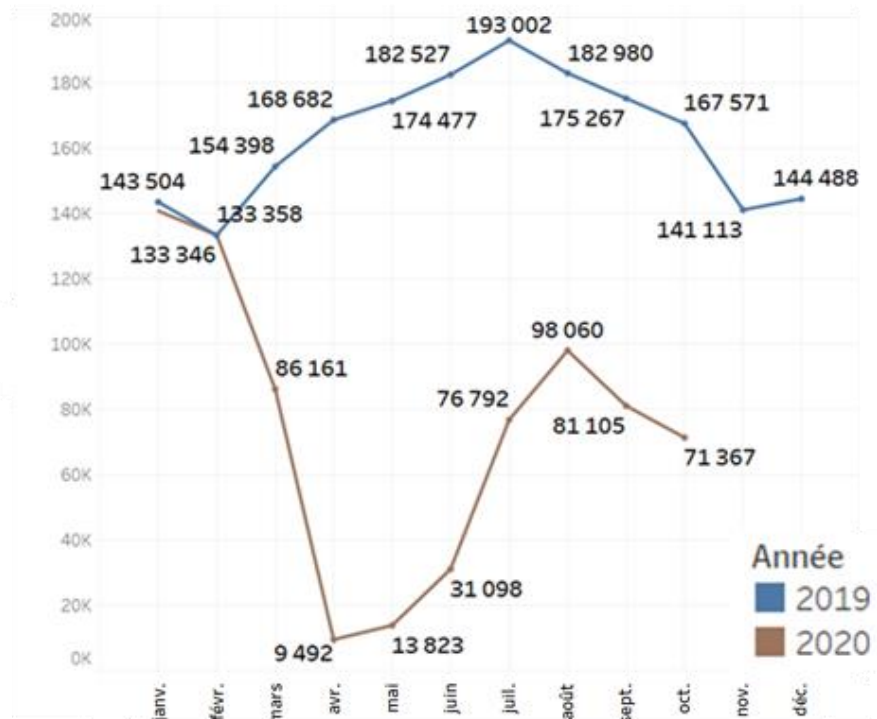
No statistics  
Sampling  
Biases  
One-way occ. reporting

# Safety study « Low activity » main findings

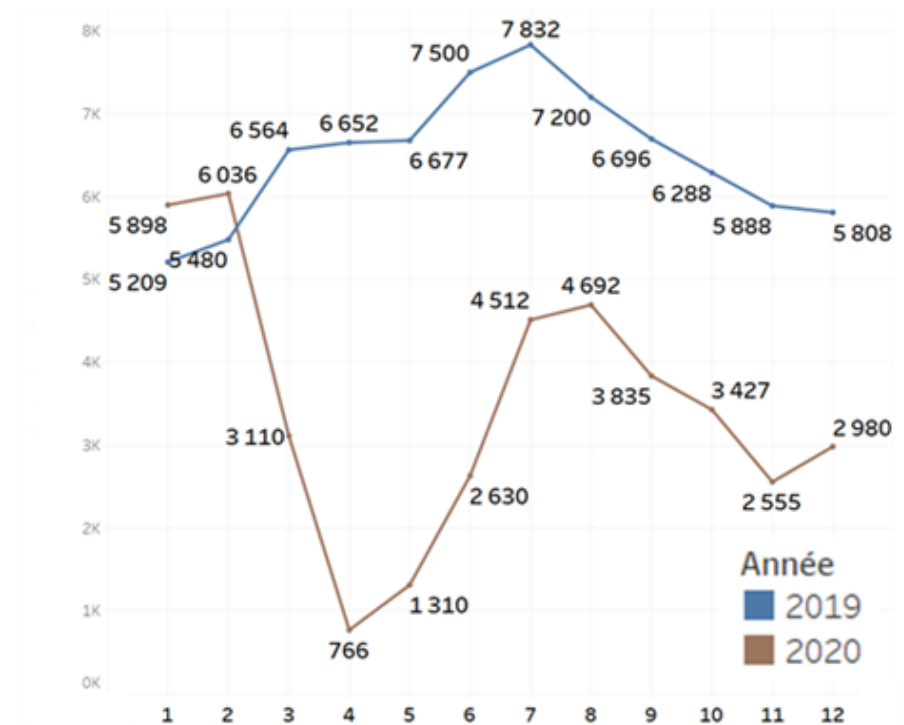
- Reporting



- Number of monthly commercial movements on French aerodromes



- Number of notifications on ECCAIRS France per month of occurrence



## WILDLIFE

SPI (SSP  
indicators)

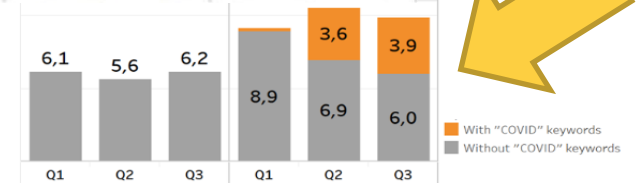
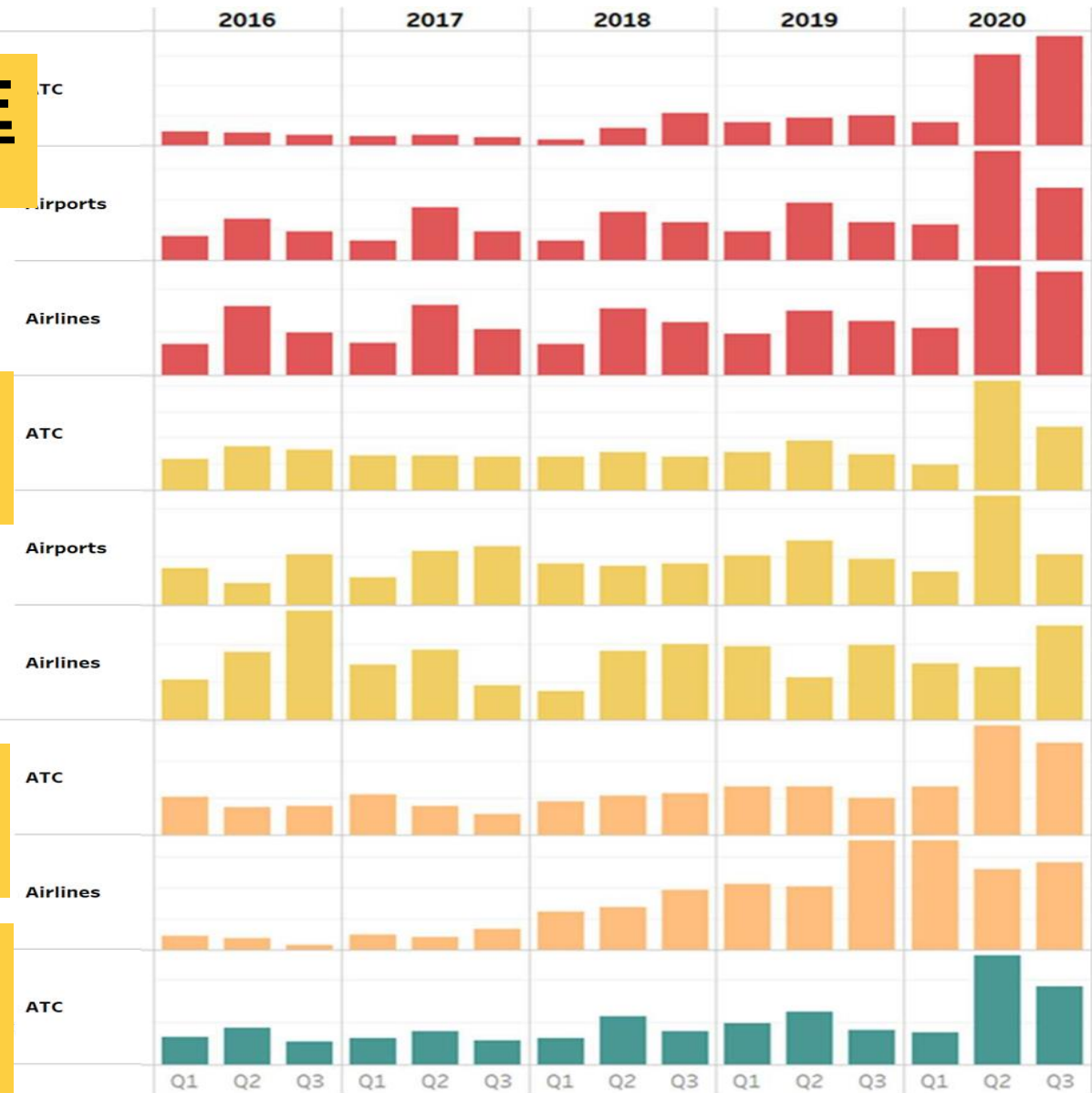
## RWY INC.

(occ p. mvts)

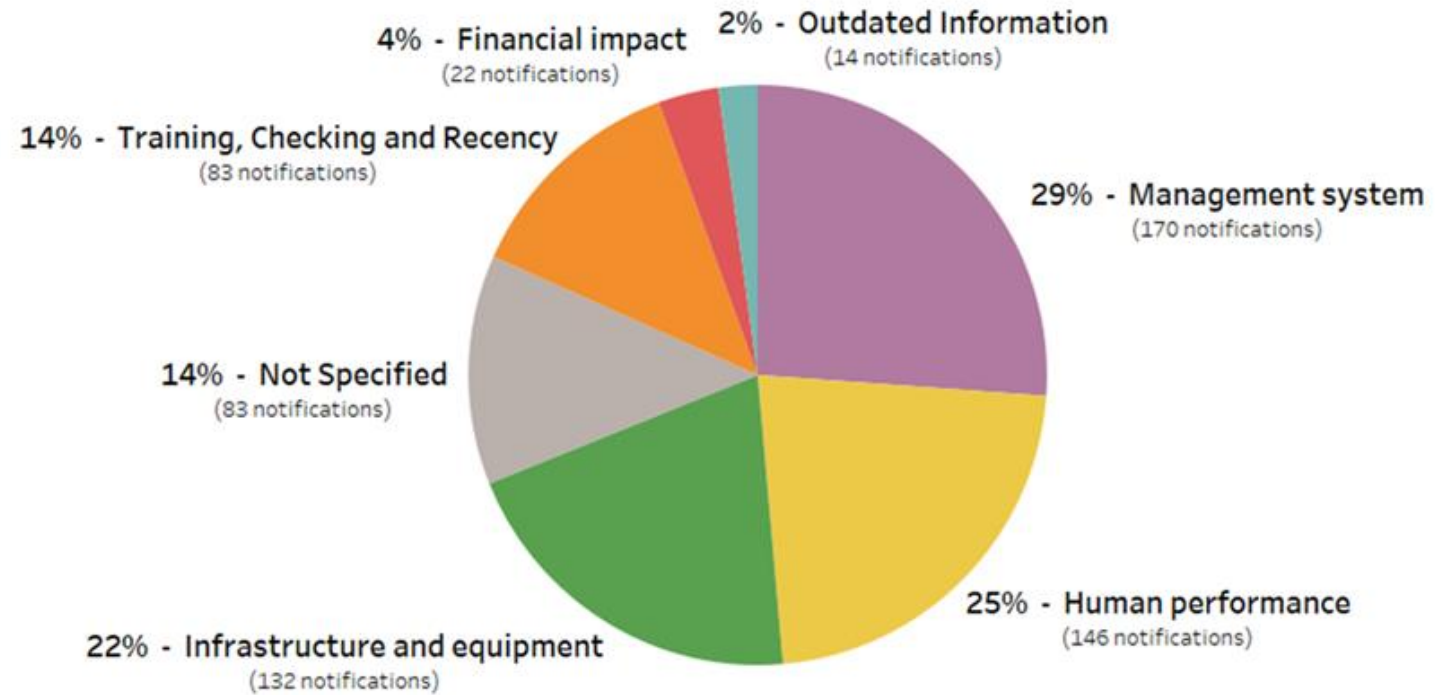
## NSA-NCA

## Airspace infringmt

## Unruly pax



## Break down by Safety Issues



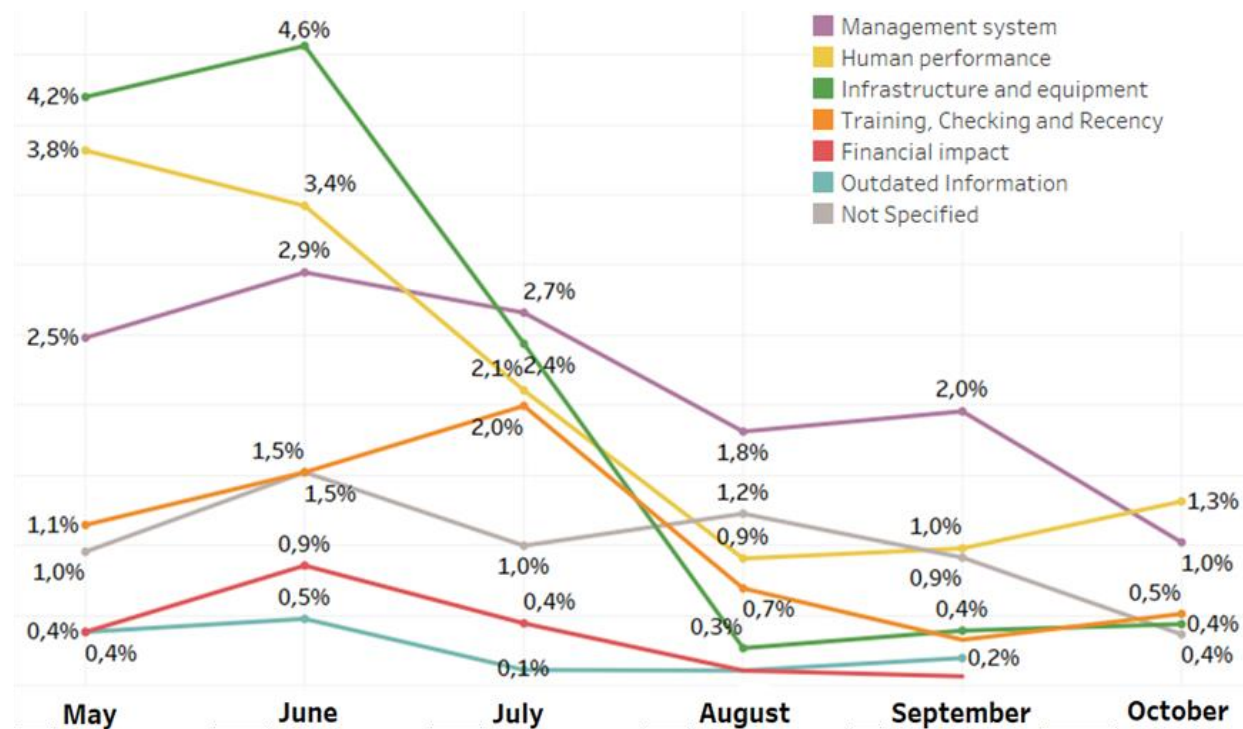
### + Unspecified threats:

- *Similarity of aircraft callsigns*
- *Ferry flight / flights without CC*
- *Regrouping / closure of airspace*
- *Others, but too few to single out*

**“Management system”: too broad**

**589 matches**

## « Covid » reports ratio over time



15%

4%

2%

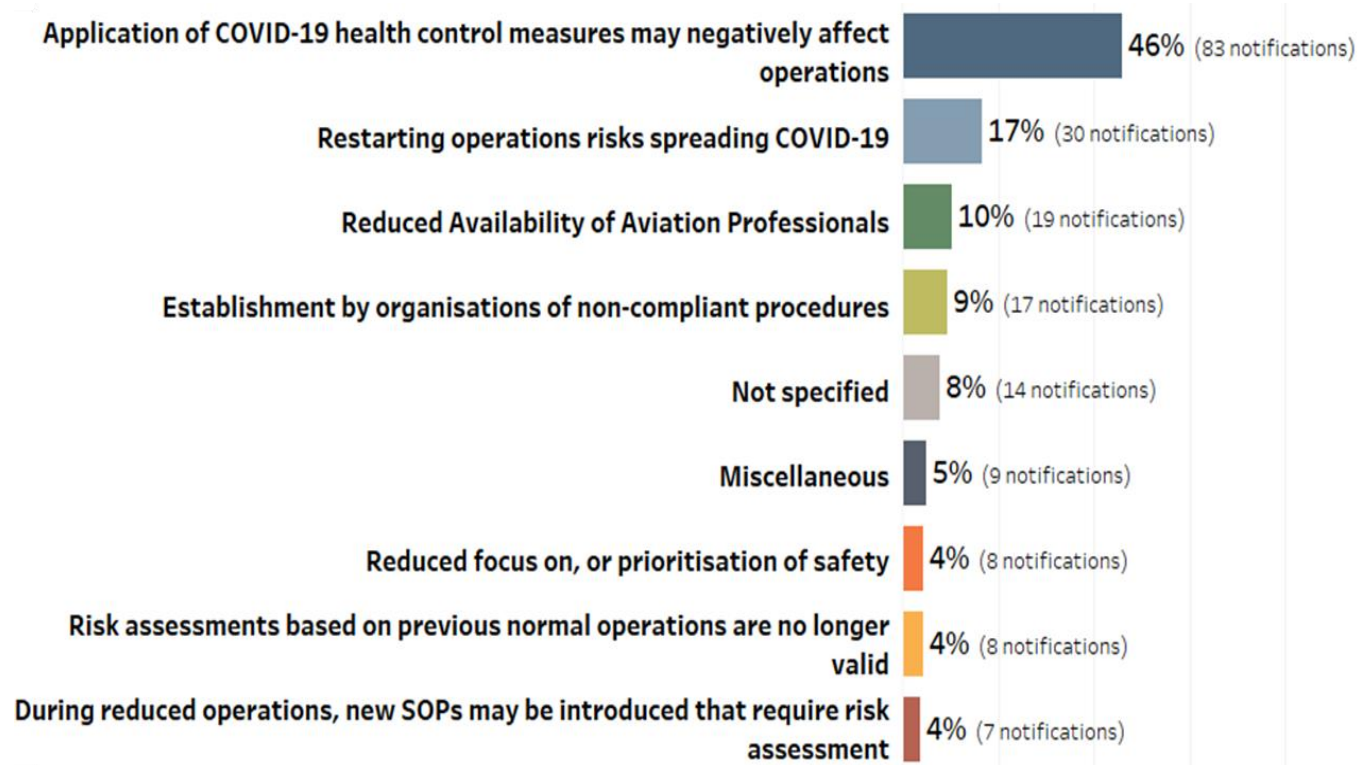


# Analysis by domain

## Main areas (1/3)

### Management system:

- Mgt system affected (AER-ANSP):
  - Internal audits program
  - Analysis of occurrences delays
  - Delayed notifications (rare cases)
- Unavailability of Aircraft Rescue and Firefighting Service (ARFFS) and/or wildlife control personnel
- Atypical operations / changes in the network due to the crisis:
  - Procedures not always adapted / known
- Maintenance: work not carried out / number of cycles exceeded
  - Lack of staff often reported



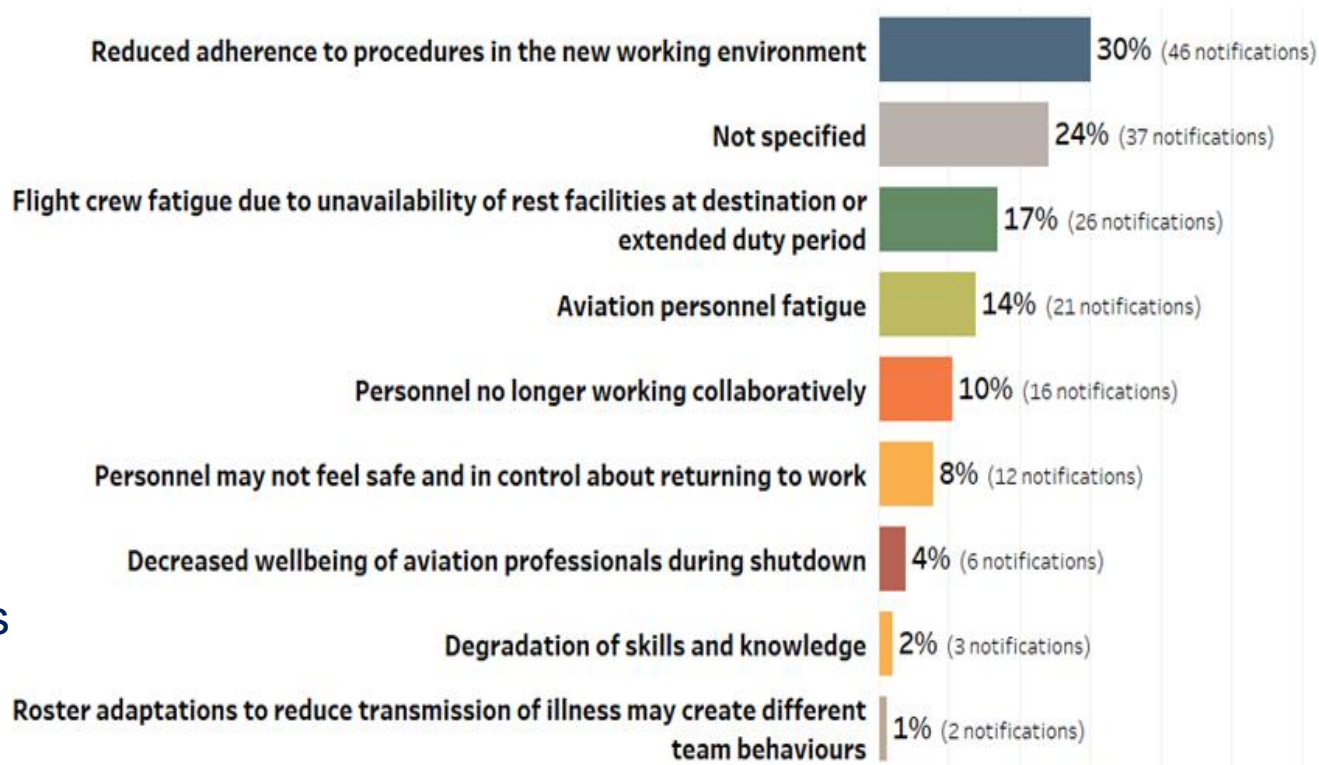


# Analysis by domain

## Main areas (2/3)

### Human Performance:

- SOP non-compliance:
  - hypovigilance (ATCO)
  - lack of recent practice
  - new procedures created by operators to adapt to the crisis
  - pressure induced by staff reduction (ground handling)
- Fatigue of flight personnel:
  - Often cited; seems mitigated by operators

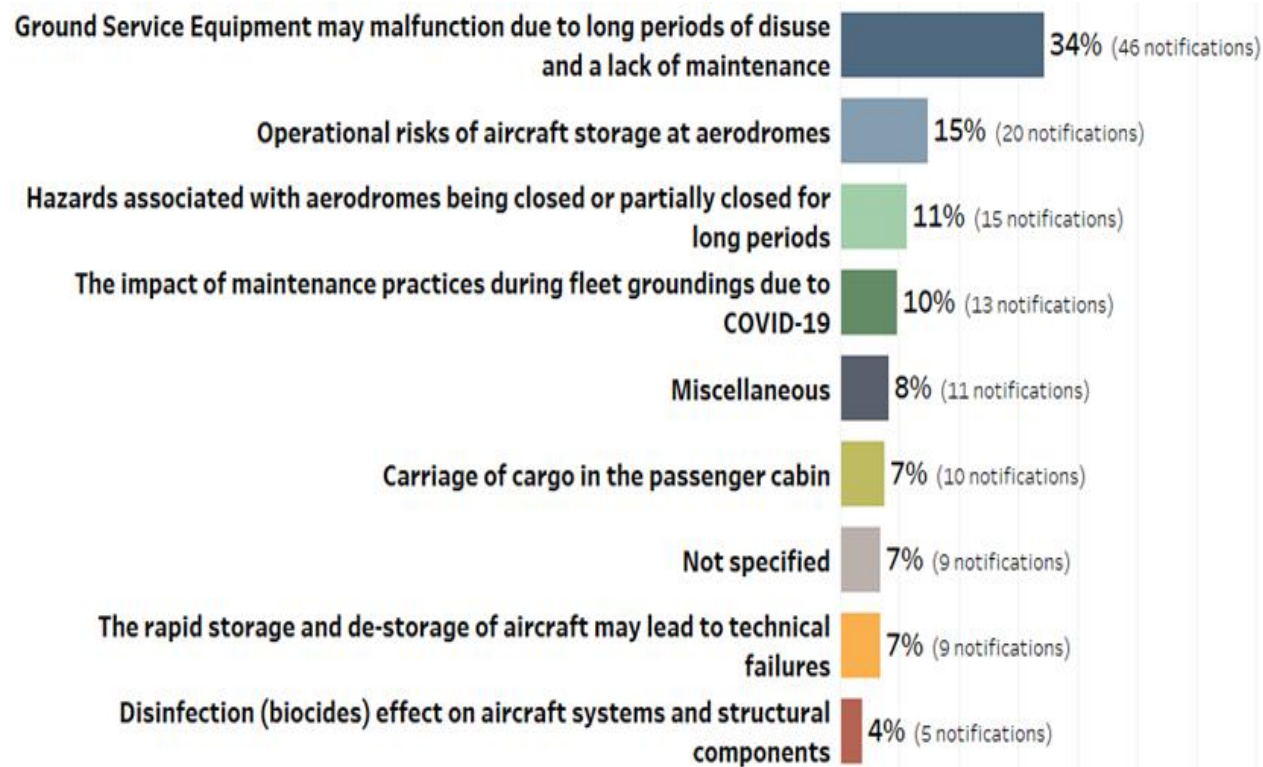


# Analysis by domain

## Main areas (3/3)

### Infrastructure – equipment:

- infrastructure degradation (runway - TWY)
  - Postponement of works
- Aircraft storage:
  - Obstructed probes (pitot / static ports),
  - Technical problems following poorly applied or poorly understood procedures.
  - Parking interfering with the movement of aircraft (TWY)



22 de-identified report samples

# Recommendations and conclusion

## Recommendations to operators

- Systemic (all operators)
  - Share lessons
  - Reinforce SMS
  - Adherence to SOPs
  - ...
- Targeted by area (OPS, ADR, NAV, HDLG, GA)

## Conclusion

- High adaptability of operators (SMS)
- Reg. exemptions compensated by efficient mitigation measures
- Need to monitor evolution of threats over the long term

# What we learned

COVID-19

Guidance /  
Advice

EASA Safety issues document was a good basis, that we refined  $\Rightarrow$  expert judgment on unprecedented situations works.



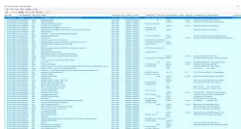
Operators' SMS remain instrumental



Financial aspects not reported (front line operators not qualified + financial help++)



Reg. 376 mandates analysis: added value but not always present, thorough...

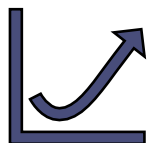


Reporting culture opened a wide area for our understanding (low risk) but improvement margin exists

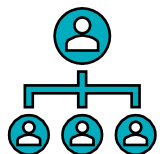
# CAVEATS



Retraining is efficient against skill fade,  
when not restricted to EMERG.



Sharp recovery may bring new issues: be alert  
SMS robustness = key



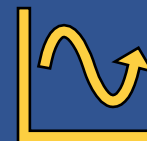
Some precursors were not reported because upstream in the  
causal factors chain (OHF « easy » to explain afterwards, not  
before)

# Subsequent steps

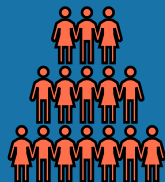
Risk portfolio  
update



Monitor risks &  
update

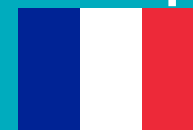


Benchmark other  
sectors, OHF view

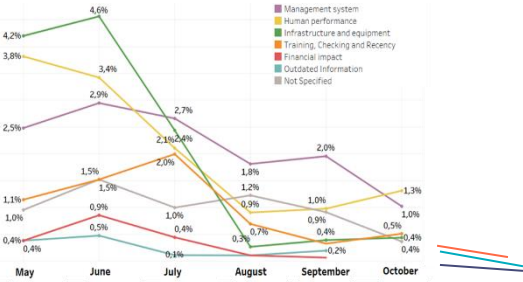


07/07: Webinar with  
operators

«1 an après»



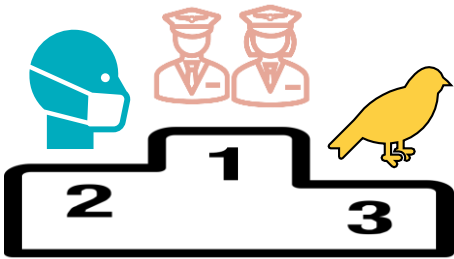
# Update findings + recommendations (prelim.)



« Covid » matches recede

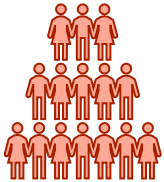
Skill fade + Impact of health measures + wildlife hazard = 1,2,3

Adherence to SOPs + Fatigue + NCA / NSA + Unruly pax

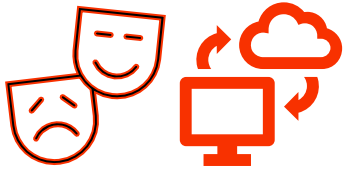




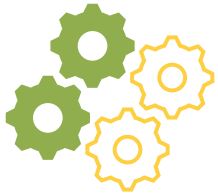
## Update findings + recommendations (prelim.)



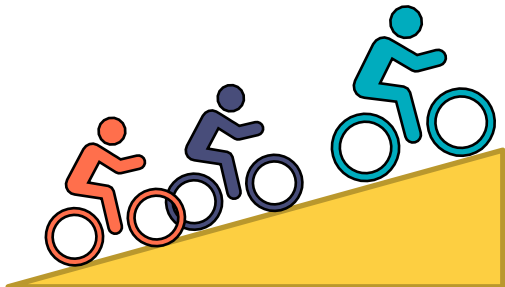
BEWARE OF OHF – work from home / Staff left or unavailable



BEWARE of Cyber risk



KEEP SMS READY AND ROBUST



Do not assume every stakeholder is ramping up at same pace

# Everlasting recommendations



REPORT

ANALYSE



REPORT

ANALYSE



REPORT

ANALYSE



**MINISTÈRE  
CHARGÉ  
DES TRANSPORTS**

*Liberté  
Égalité  
Fraternité*



# THANKS FOR YOUR ATTENTION

## QUESTIONS ?