

# EASA

## Risk management 145/Camo at Brussels Airlines



### Peter De Schepper

- Captain A320
- Safety Manager in all operational divisions, including Part 145 & CAMO
- Member of the Lufthansa Group Safety Committee
- Risk Management Expert & Instructor
- Governmental advisor on aviation matters
- Project management in operational systems such as FDM, FRMS, Scheduling, ...
- 15+ years of experience in safety

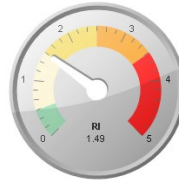
# Brussels Airlines in a nutshell

One of the four  
Lufthansa Group hub  
airlines

Member of Star Alliance

## Safety Management

throughout entire  
organization



## FLEET

33 A320F

9 A330



+ 2 CRJ-900 wetlease-in by Cityjet



National airline  
of Belgium

Belgian AOC & Operating License (B-3019)

**160** Flights/day

to

**85**

destinations



Europe – Africa - NATL

**Africa Specialist**

17 sub-Saharan destinations

**400**

**M&E staff**



3200 employees in total



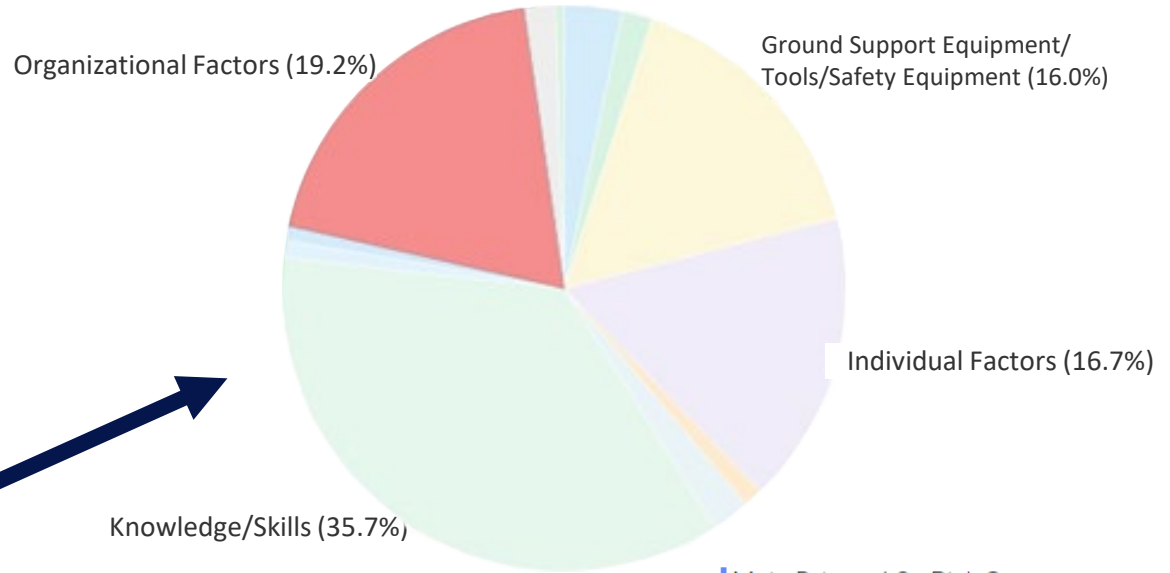
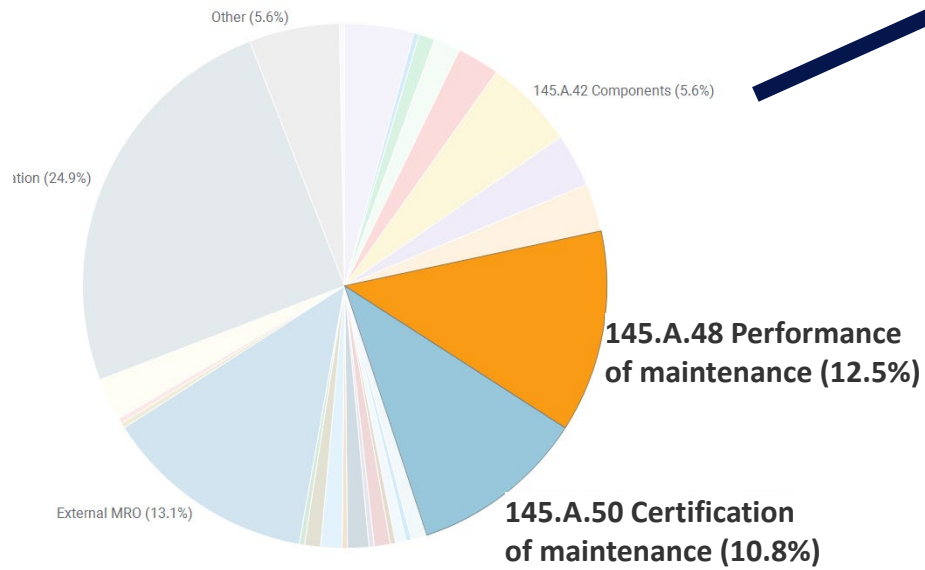
Own Maintenance Activity

Part-CAMO and Part-145 approval



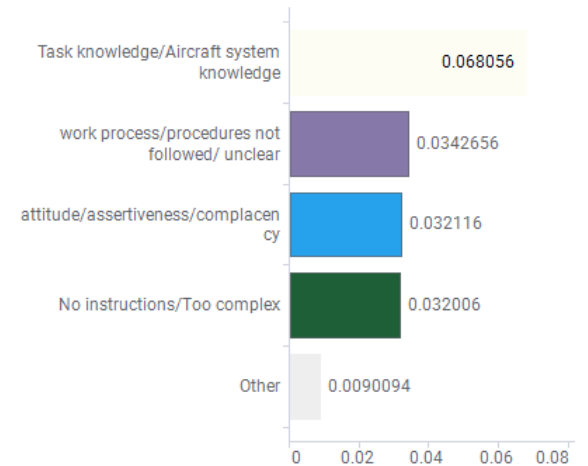
ATO & CCITP Approval

# Risk Mapping: searching for predictiveness



**TIME PRESSURE**

Main Driver - L3 - Risk Sum



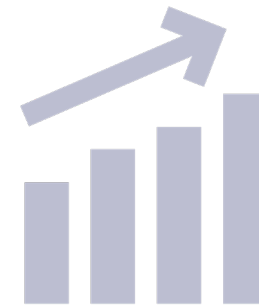
MainDriver - L3 - 2

Sum(RiskValueNumber)

# Increasing operational stability during summer planning

## Identified measures

- 1 Spread connecting wave in time
- 2 Respecting night work window
- 3 Sufficient maintenance windows
- 4 Minimum ground time in BRU for LHL
- 5 Proportion A/C in night stop



**Improving air safety  
thanks to extensive risk  
mapping throughout the  
entire organization**