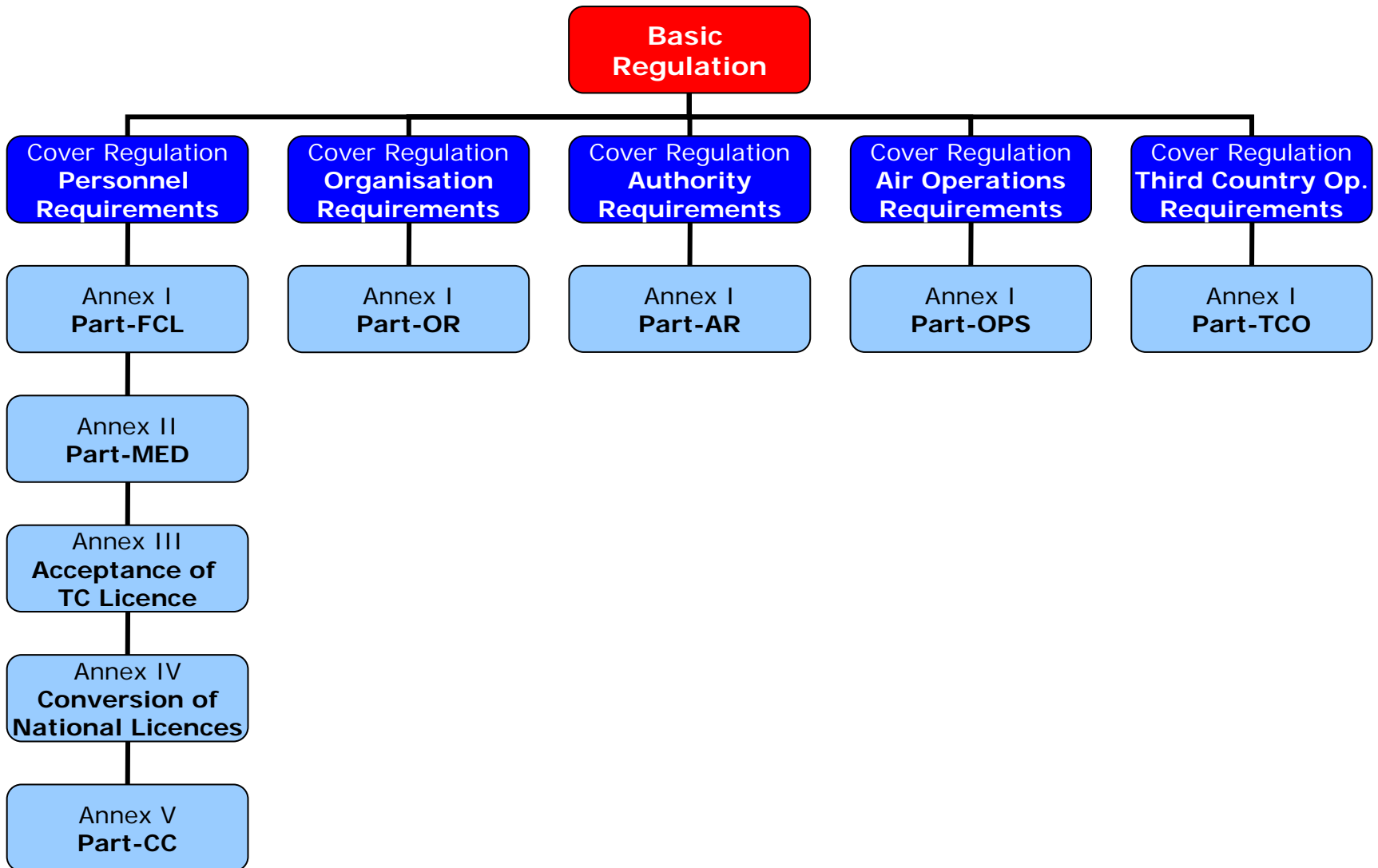


# Rule Structure

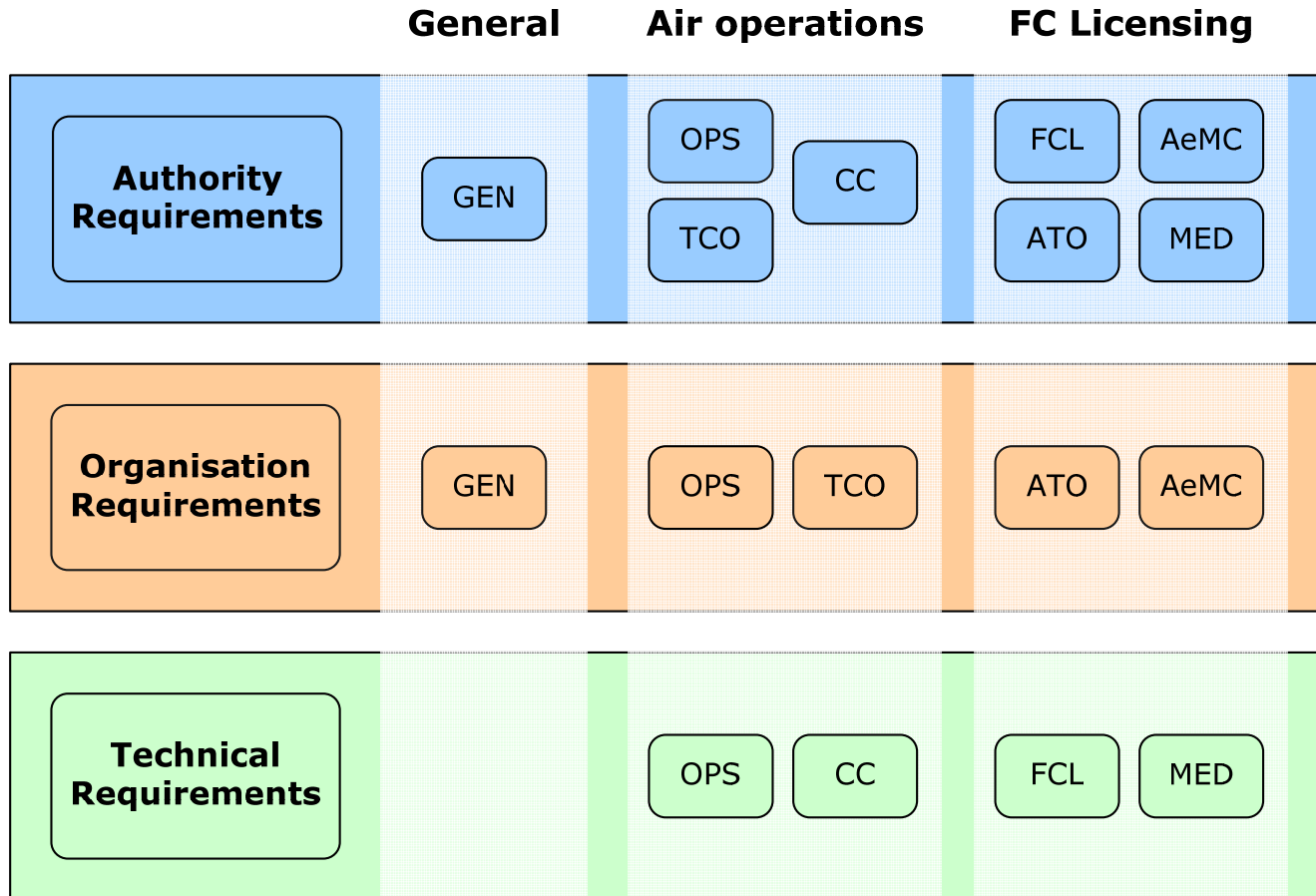


# Rulemaking structure



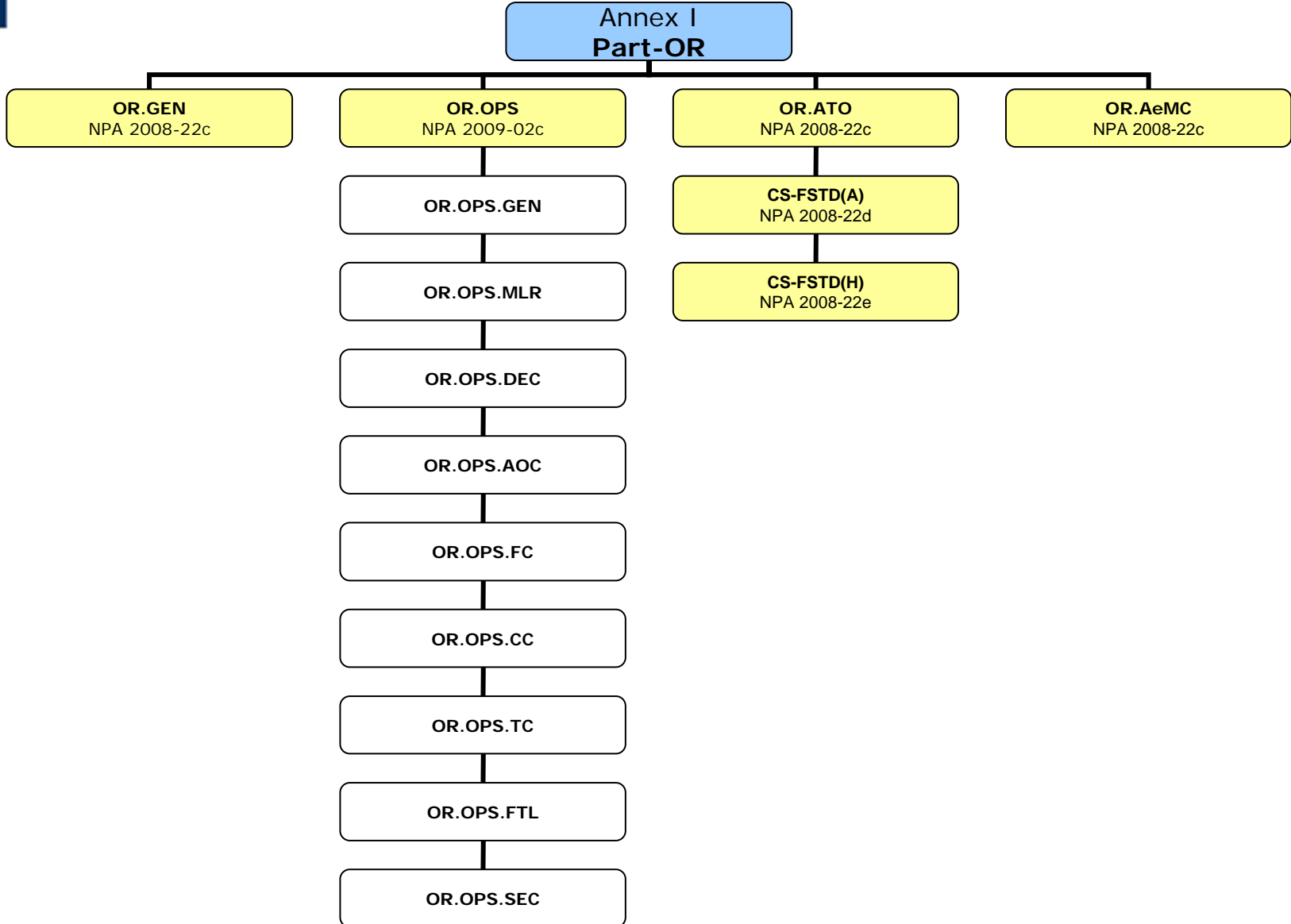


# New Rulemaking structure



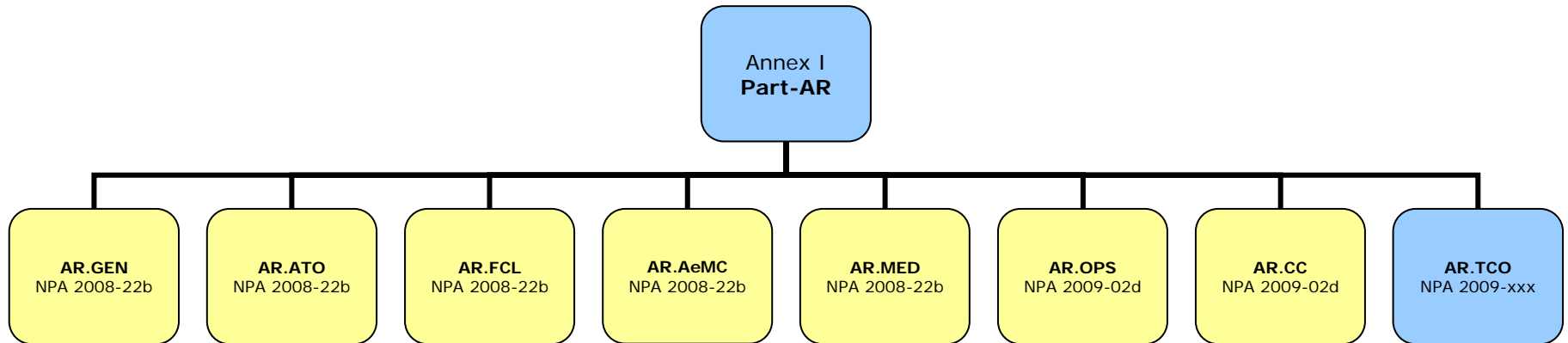


# Overview of Part-OR



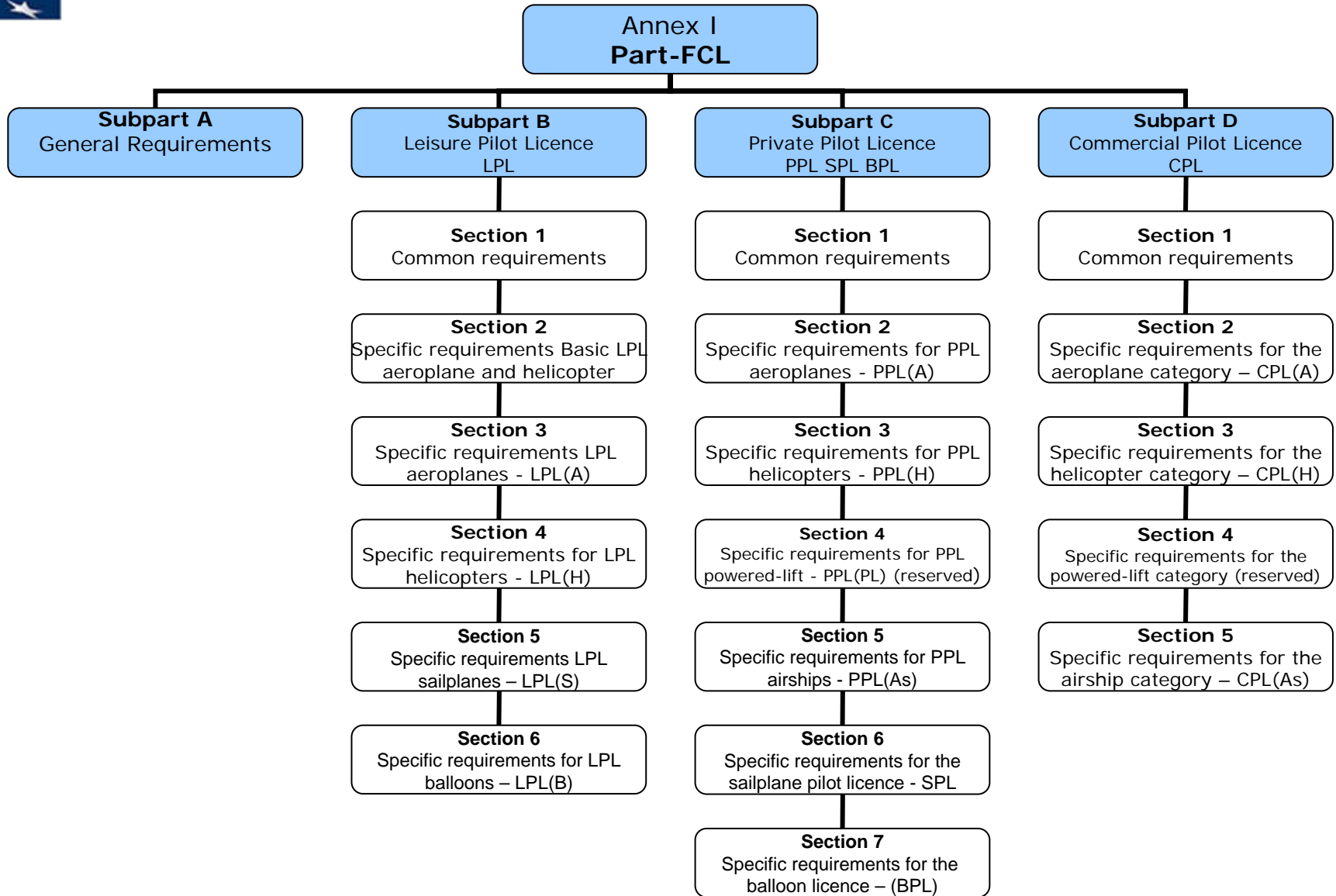


# Overview of Part-AR



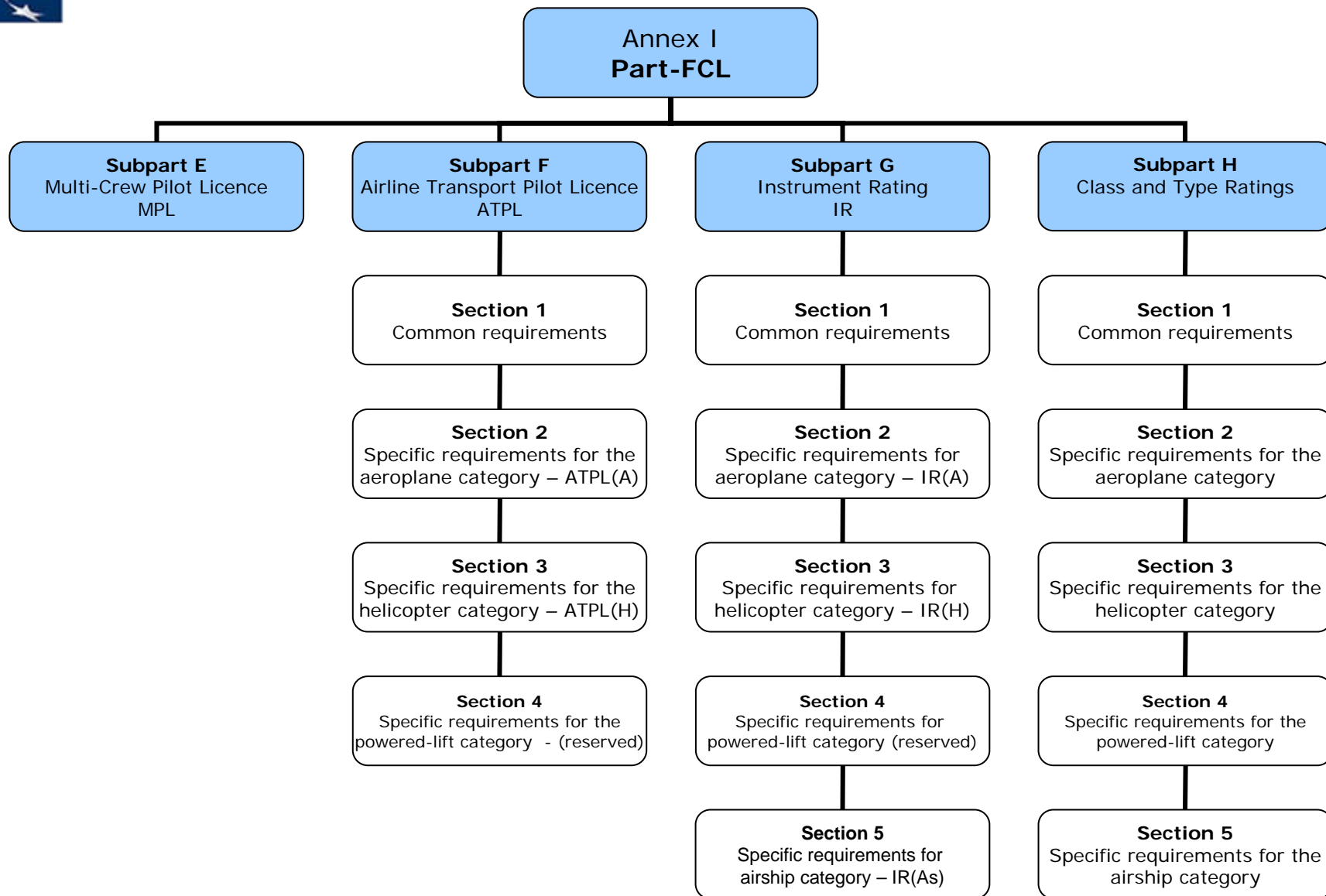


# Overview of Part-FCL



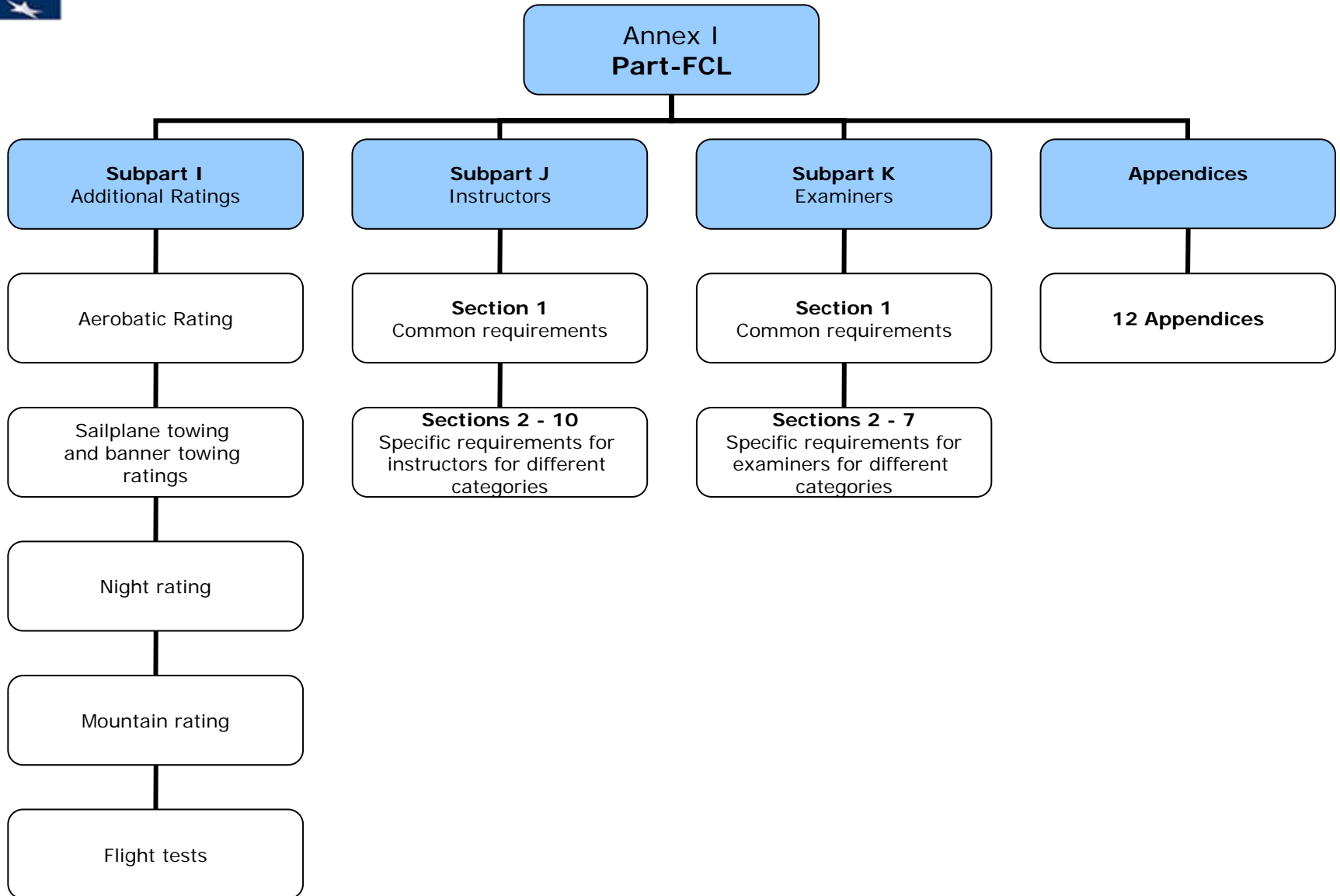


# Overview of Part-FCL



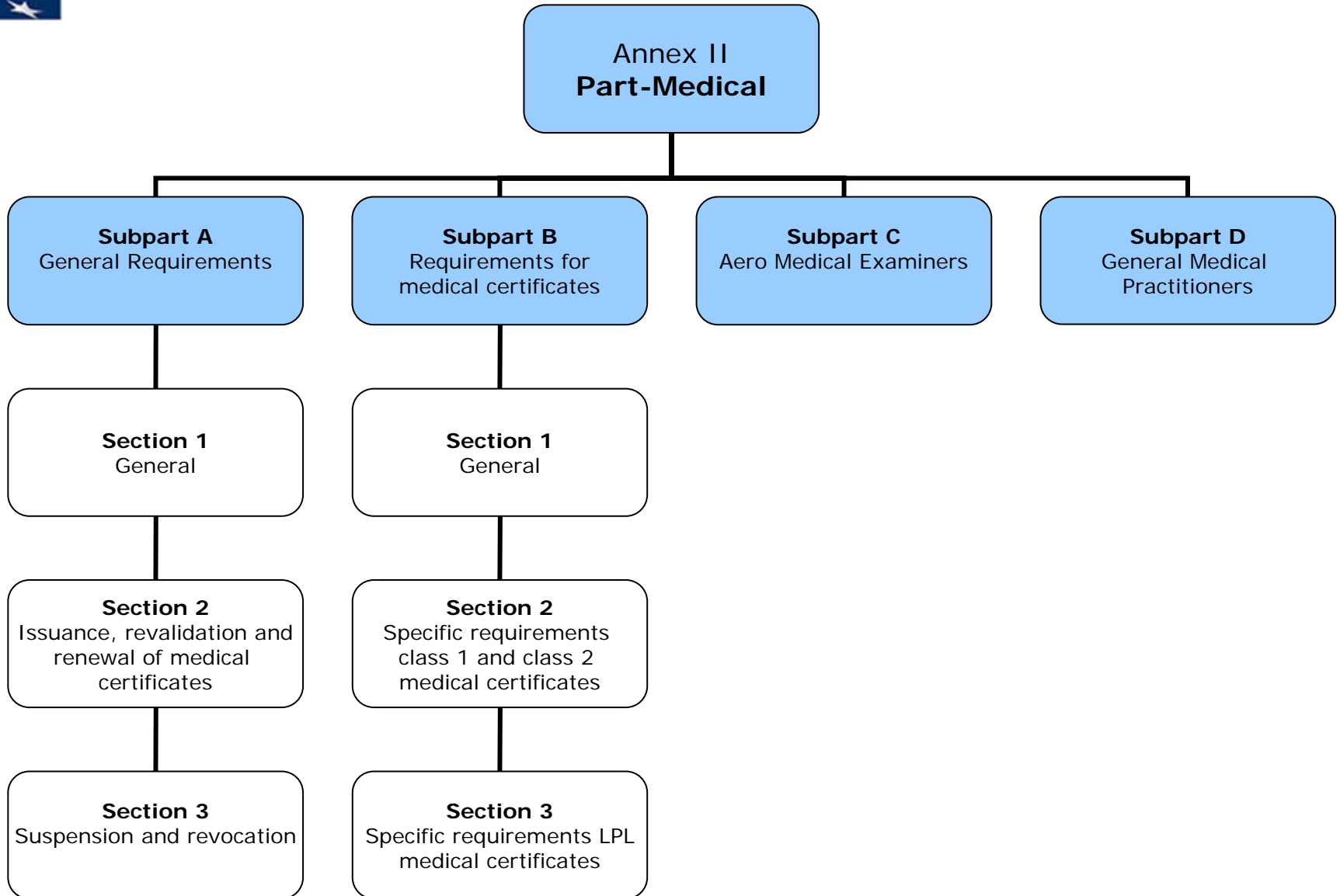


# Overview of Part-FCL



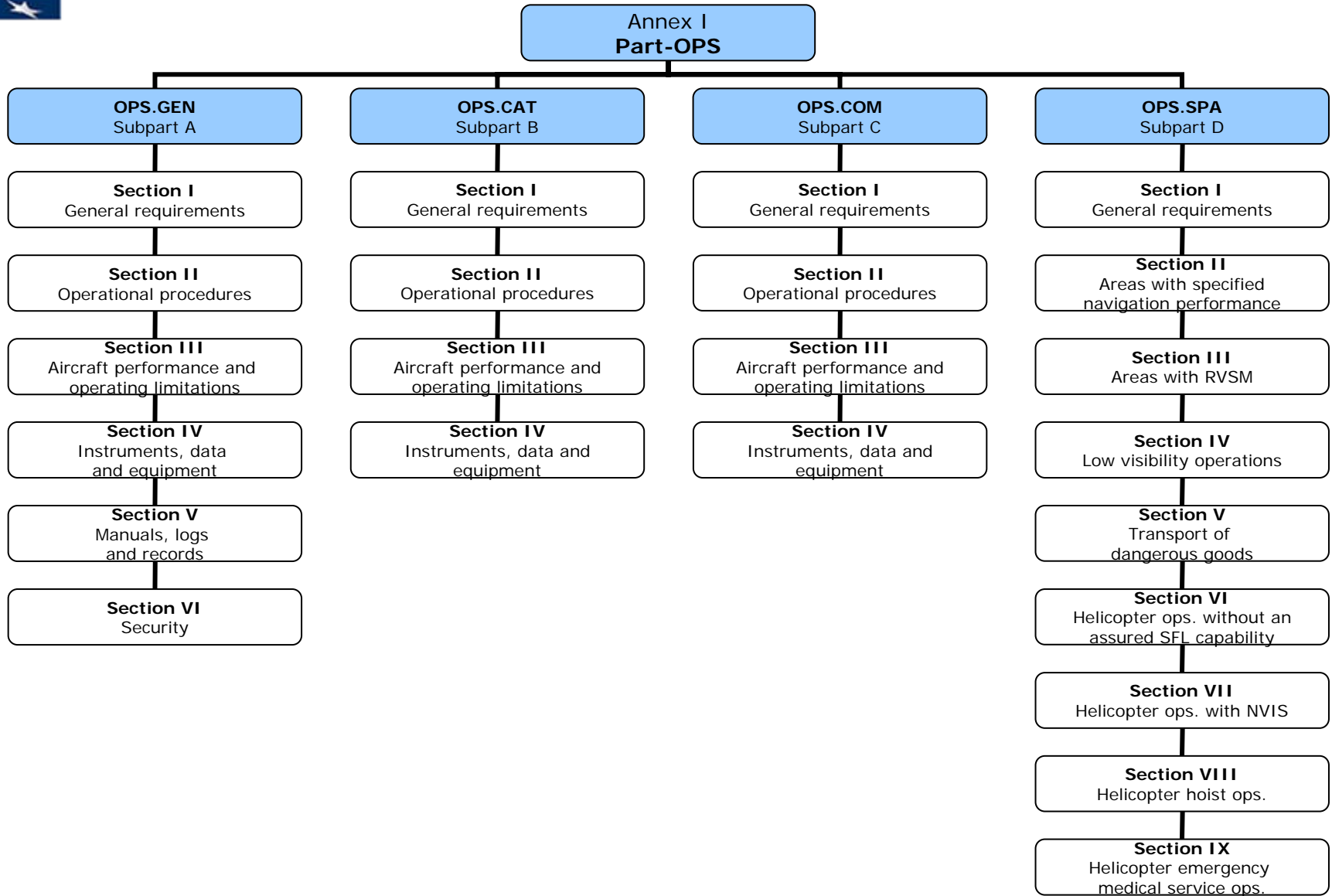


# Overview of Part-Medical



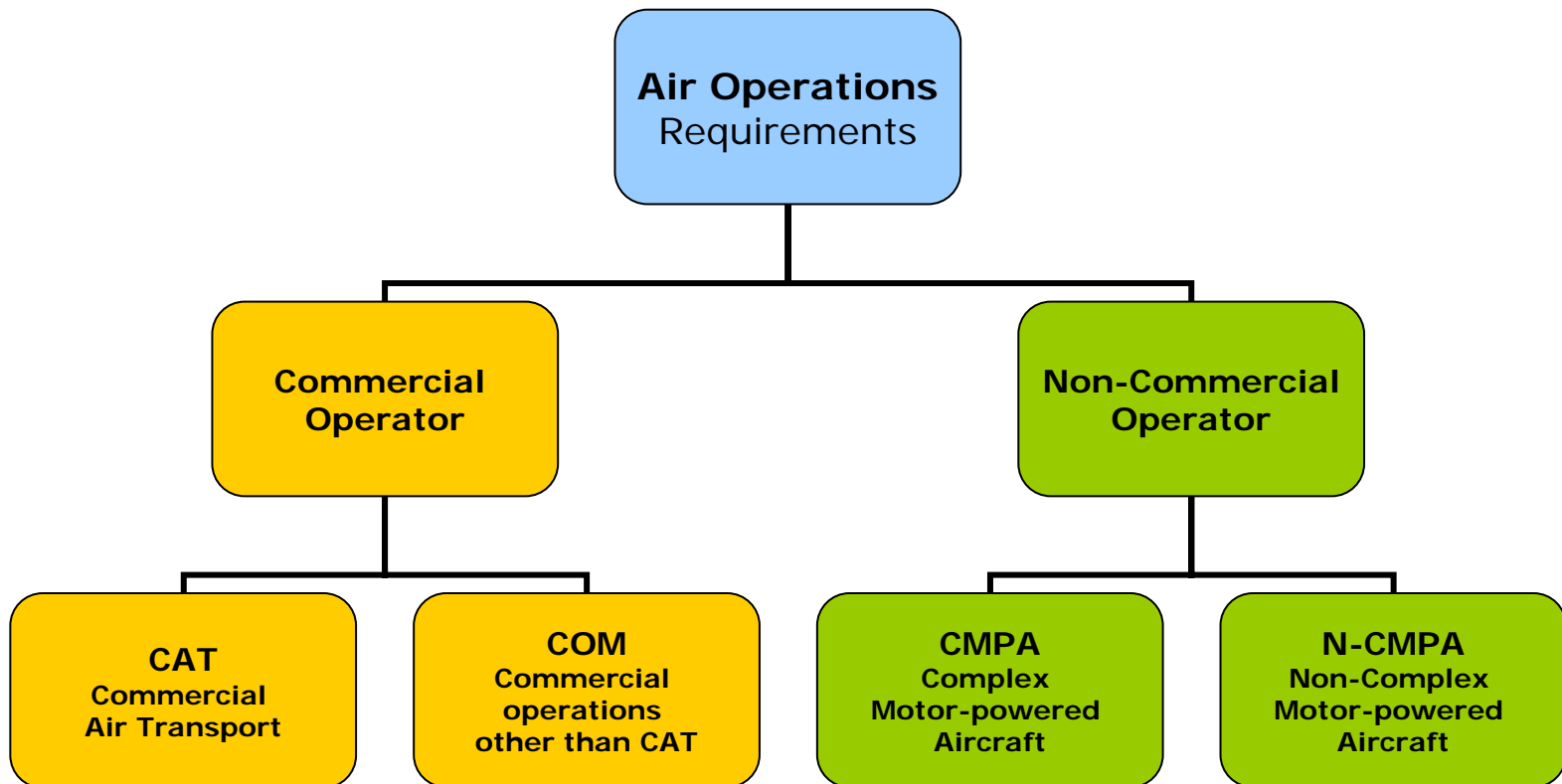


# Overview of Part-OPS





# Operator classification





# Scope of requirements for operators

	Commercial Operator		Non-commercial Operator	
	CAT	COM	CMPA	N-CMPA
OPS.GEN	✓	✓	✓	✓
OPS.CAT	✓			
OPS.COM		✓		
OPS.SPA	✓	✓	✓	✓
OR.GEN	✓	✓	✓	
OR.OPS.GEN	✓	✓	✓	
OR.OPS.MLR	✓	✓	✓	
OR.OPS.DEC			✓	
OR.OPS.AOC	✓	✓		
OR.OPS.FC	✓	✓	✓	
OR.OPS.CC	✓		✓	
OR.OPS.TC	✓	✓	✓	
OR.OPS.FTL	✓	✓	✓	
OR.OPS.SEC	✓	✓	✓	